

MIAMI EDITION

FLORIDA DESIGN

The Art Issue

**Basel Fever Takes
Over Miami**



HELLO, DARKNESS
An Edgewater Residence
Breaks the Rules



EILYN JIMENEZ

Sire Design

"Chiaroscuro Chic," page 112

Sire Design principal Eilyn Jimenez didn't miss a beat when her client told her he wanted a monochromatic design in the darkest tones of black she could find. Instead, she set about sourcing furniture in shades of black, blue, and gray, and coming up with ways to balance the apartment with its spectacular city and water views. The end result, which is on the cover of this issue, is certainly not for everyone, but the homeowner couldn't be happier. "The unit shines at night," says Jimenez. "That's when everything comes to life."



SATOMI YOSHIDA-KATZ & TODD KATZ

Yoshida + Zanon Design Atrium

"A Curated Approach," page 122

When two New York City homeowners with a dynamic art collection purchased a condo at the Residences by Armani Casa tower in Sunny Isles Beach, they turned to the married couple who head up Yoshida + Zanon Design Atrium for their professional expertise. The design directive? A showcase for art, as well as an elegant vacation retreat. "Based on the clients' request to display their art and layer in pops of color, we curated the design around several calm and soothing whites, which allows the furniture, decorative lighting, and artwork to shine," says Satomi Yoshida-Katz. In other words: Mission accomplished.



NICOLE WHITE

Nicole White Designs Interiors

"Diverse Perspectives," page 130

For a recent project that involved a massive home in Pinecrest (14,322 square feet with eight bedrooms and 11 baths) owned by clients with a cherished art collection made up mostly of Black artists, designer Nicole White went in with one word front of mind: balance. "The challenge was making sure both homeowners had their wishes—modern and calm for the husband, maximalist and dramatic for the wife," says White, who worked on the residence with her assistant designer, Arianne Hill. "We designed this home to be truly reflective of both clients and their disparate personalities."



BLANCA WALL

The Wall Studio

"Miami Modern," page 138

"A seamless connection to the outdoors is undeniable when you set foot in this beautiful tropical oasis," says Blanca Wall about a 10,000-square-foot penthouse atop The Ritz-Carlton Residences, Miami Beach that recently received her designer's touch. "The homeowners wanted a peaceful family retreat—comfortable yet approachable, reflecting a relaxing but luxurious atmosphere." Wall delivered with a clean, contemporary layout that provides a backdrop for the homeowners' art collection, as well as a few strategies to tame the open floor plan, essentially creating rooms without defining walls.



OSHRAT ROTHSCHILD

Sarvian Design Group

"Neutral Territory," page 150

"I have always believed that neutral colors make design timeless," says Oshrat Rothschild, head of Sarvian Design Group. The designer put those words into action at a 4,000-square-foot townhome in Aventura, where she relied on neutral tones for a quiet, subdued elegance. The recent undertaking included a total gut renovation, which involved shifting the kitchen to a new area of the house, removing a bathroom, and adding a new room upstairs. "With these adjustments, I was able to create additional open spaces, allowing for a more fluid layout," says Rothschild. "The configuration now helps to promote communication and unites everyone when hosting guests."

INTERIOR DESIGN SATOMI YOSHIDA-KATZ & TODD
KATZ, YOSHIDA + ZANON DESIGN ATRIUM,
NEW YORK, NEW JERSEY & JAPAN
TEXT JEANNE DE LATHOUDER
PHOTOGRAPHY TROY CAMPBELL, MIAMI, FL



A Curated Approach

ABOVE: The private elevator foyer reveals a colorful preview of the vibrant modernist aesthetic that unfolds inside. An Ara armchair from Missana holds its own with high-impact yellow upholstery and glossy blue legs. The curvy Papillon console table and Cloud mirror by Tom Faulkner provide shapely complements.

IN SUNNY ISLES BEACH, A HUSBAND-AND-WIFE DESIGN TEAM CRAFT A LIVABLE-GALLERY GETAWAY FOR TWO NEW YORKERS AND THEIR IMPRESSIVE ART COLLECTION

LEFT: Behind custom sliding doors from Glas Italia, a den and office space offers a private cove just beyond the elevator foyer. A compelling artwork by Chinese artist Jacky Tsai titled *Floral Skull* generates a contemplative visual juxtaposition to the sleek Poltrona Frau daybed.

TO ACHIEVE THEIR DESIRE for a family getaway that could brilliantly showcase a modern art collection, two New York City homeowners gravitated to the sleek gallery allure of the Residences by Armani/Casa tower in Sunny Isles Beach. Perched on a peninsula between the southern Atlantic and Dumfoundling Bay, their enviable apartment offers dramatic ocean vistas from the living area and primary suite. In contrast, the opposite three bedrooms enjoy sweeping views of the bay and city. With 3,200 square feet of interior space that includes five-and-a-half bathrooms and a den/office, the condominium proved to be the ideal spot for the New Yorkers' second home.

When it came to interior design matters, the clients turned to the tailored approach of international interior designers Satomi Yoshida-Katz and her husband

and partner, Todd Katz, to lead the charge and create the ultimate retreat and gallery for their art collection. Owners of Yoshida + Zanon Design Atrium (YZDA), which has offices in New York, New Jersey, and Japan, Satomi and Todd's primary challenge was maintaining maximum ceiling heights throughout while also integrating a dynamic lighting system with the range to illuminate the art accurately—and set the mood for fine dining with friends.

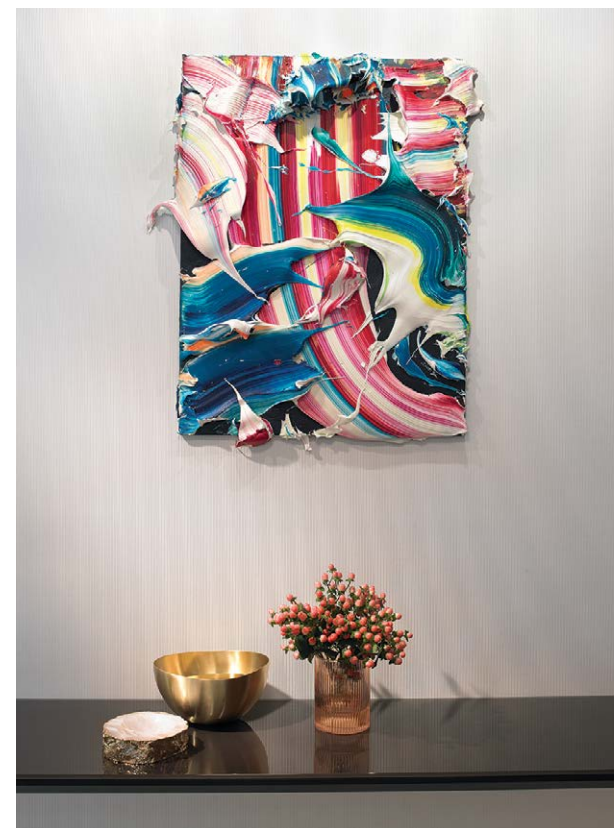
“In collaboration with Acoustic Architects and Apure Architectural Lighting, we were able to design an almost invisible lighting array all within a total ceiling drop of only seven inches,” says Satomi. “Based on the clients’ request to showcase their art and layer in pops of color, we curated the design around several calm and soothing whites, which allow the furniture, decorative lighting, and artwork to shine.”

The YZDA team chose a textured off-white wallcovering for the gallery entry to soften the space and show off the artwork. They also selected a lively yet laid-back large-format marble floor tile to create an element of luxury and ground the bright colors. “When stepping out of the elevator into the private foyer, three words came to mind: provocative, coral-reef, and VIP,” says Todd. “Provocative for the high-gloss black-red entry doors, coral-reef for the Papillon console by Tom Faulkner, and VIP for the grand Ara chair by Missana. These elements add up to create a welcoming vibe along with a sense of curiosity.”

RIGHT: With its ocean view, the living room emits a floating sensation echoed by Frank Stella's *Bonne Bay* lithograph and screen-print, which hangs above Flexform's Gregory sectional. A moss-green lacquered glass Rubino coffee table by Sovet Italia and a swivel Flexform armchair punctuate the space.



Sovet Italia's Palace glass-topped dining table and gold-mirrored Magda credenza bring glamorous reflective elements to the dining room. Toni Sanchez's vibrant *Mad Men* artwork adds a jolt of color to the room. Hot pink wool Chabada dining chairs from Roche Bobois and Quasar's Spectre chandelier make dazzling accents.



ABOVE: Beyond the private elevator foyer, a gallery entryway speaks to the homeowners' love of contemporary art. Yann Hourri's sculptural acrylic makes a kinetic first impression above a console from Sovet Italia.

Upon entering the home, custom color-blocked sliding doors by Glas Italia integrate with the art collection, enclosing a private den and office. In the living room, Frank Stella's abstract color-field lithograph *Bonne Bay* hangs majestically above a massive sectional poised to take in the ocean views. The adjacent dining area dazzles with lacquered glass, mirror finishes, hot pink chairs, and a bold artwork by Toni Sanchez titled *Mad Men*. Overhead, a Spectre chandelier by Quasar manages to achieve balance through asymmetry.

"We like to enter this space with the Apure lighting system set to gallery mode," says Satomi, "which dims the main overhead lighting and washes the artwork in ultra-high CRI light. Stealthy, invisible Sonance speakers were skim-coated and painted into the walls, allowing the artwork to take center stage."

The homeowners have found their Sunny Isles Beach retreat offers a soothing respite from their metro-NYC lifestyle. They visit frequently with their boys, and just as they'd wished, their beachside haven has become the most fantastic family getaway.

"We always endeavor to create spaces that reflect our clients' tastes and lifestyles while remaining inviting, comfortable, and functional to live in," notes Todd. "The homeowners' unwavering trust in us was paramount to realizing this successful project—and for that, we are most grateful."

Spare and ethereal, the guest bedroom showcases bold primary colors with an Amante bed in matte azure blue paired with coral Nobilis Otello velvet upholstery. Tom Faulkner's sky-blue Tiffany chair softens the look.



SOURCES

OFFICE/DEN

Sliding doors – Glas Italia, glasitalia.com
Daybed – Poltrona Frau, New York, NY

ELEVATOR FOYER

Armchair – Missana, missana.es
Upholstery – Europost, Gabriel, gabriel.dk
Console – Papillon, Tom Faulkner, tomfaulkner.co.uk

Mirror – Tom Faulkner, tomfaulkner.co.uk
Table lamps – Karboxx, karboxx.com

LIVING ROOM

Sofa – Flexform, New York, NY
Pillows and throws – Jonathan Adler, Miami, FL
Cocktail table – Sovet Italia, sovet.com
Side table – Flexform, New York, NY
Armchair – Flexform, New York, NY
Area rug – The Rug Company, therugcompany.com

DINING AREA

Console – Sovet Italia, sovet.com
Table – Sovet Italia, sovet.com
Chairs – Roche Bobois, Miami, FL
Chandelier – Quasar, quasarholland.com

BOYS' BEDROOM

Convertible bunk beds and sofa – Clei, clei.it
Chair – Herman Miller, storehermanmiller.com

Area rug – The Rug Company, therugcompany.com

GUEST BEDROOM

Bed – Sovet Italia, sovet.com
Throw – Armani/Casa, Miami, FL
Side table – Sovet Italia, sovet.com
Jude table lamp – Vistosi, vistosi.it
Chair – Tom Faulkner, tomfaulkner.co.uk

Area rug – Ingio Elizalda Rugs, New York, NY

PRIMARY BEDROOM

Bed – Poltrona Frau, New York, NY
Bench – Poltrona Frau, New York, NY
Bedside table – Era Comodino, Living Divani, livingdivanti.it

Ceiling lighting – Tantus, Apure Architectural Lighting, Miami, FL

Wallcovering – Brett Design, New York, NY
Area rug – Kush Rugs, kushrugs.com

THROUGHOUT

Construction – MV Group, Miami, FL

BELOW: Awash in a crisp palette of blue, white, and gray, the kids' bedroom demonstrates a clever use of space with Clei's convertible bunk bed wall unit, which includes a sofa and desk.



Clean lines and fluid accents express an elegant minimalist aesthetic in the primary bedroom. Poltrona Frau's Letto Aurora bed and Fidello | Panca bench pair with Living Divani's chic Era Comodino bedside table. Brett Design's mesmerizing Chicago Ombre wallpaper and Apure's cylindrical Tantus ceiling light create shape-shifting appeal.

